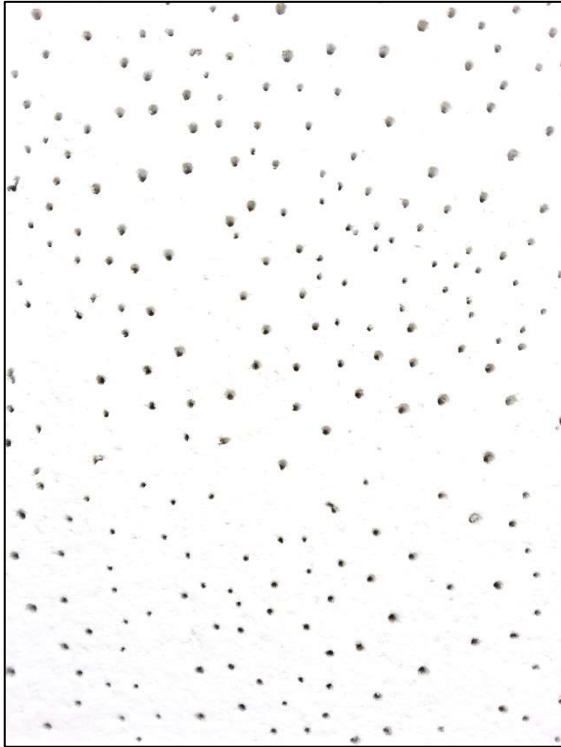


MCPS – RH 99



Moisture Content
2% - JIS A 6301

Modulus Of Rupture
17kgf/m² - JIS A 6301

Flame Spread / Fire Resistance
US: Class A Flame Spread 25 or under
BS 476 Part 6 & 7 : Class 0 / Class 1

Thermal Conductivity
0.045kcal/mh°C

Light Reflectance
0.80 & above

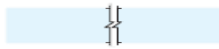
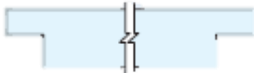

Sound Absorption Coefficient
5/8: NRC : 0.55

Ceiling Attenuation Class
CAC : 36

Guaranteed
10 years against visible sagging

Country Of Origin
Made In Japan

Product Specification

Excel-Tone MR	Thickness	Standard Size	Edges
Exposed Board	1/2", 5/8"	24" X 24" (O.C) 24" X 48" (O.C) 600mm x 600mm (O.C) 600mm x 1200mm (O.C)	 4 Sides: Square Edge
Revealed Board	5/8"	24" X 24" (O.C)R 24" X 48" (O.C)R 600mm x 600mm (O.C)R 600mm x 1200mm (O.C)R	 4 Sides: Revealed Edge
Slim-line Board	5/8"	24" X 24" (O.C)NR 24" X 48" (O.C)NR 600mm x 600mm (O.C)NR 600mm x 1200mm (O.C)NR	 4 Sides: Slim-Line Revealed Edge